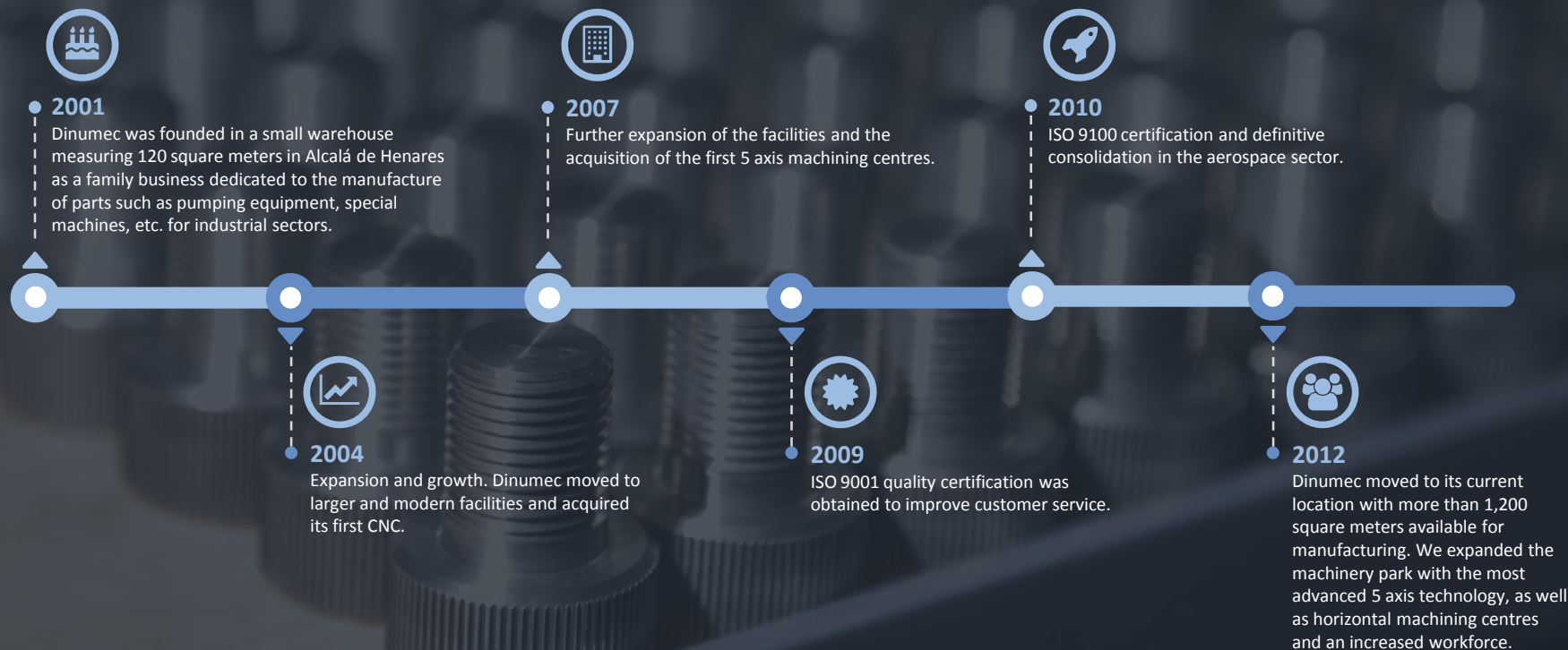




**Corporate
Presentation**





We are a company that specialises in manufacturing high precision parts, in small and medium series, principally for the aeronautical, aerospace and defence sectors.





PRODUCTION DEPARTMENT

We have manufacturing systems that allow us to deal with any type of part regardless of its complexity. These include:

- 3 and 5 axis machining centres.
- Horizontal machining centres.
- CNC and universal lathes.
- Wire cutting EDM machines.
- Die sinking and drilling EDM machines.
- Laser engraving.

Furthermore, we have a section dedicated to the management of cutting tools in order to optimise machinery running time.



> A fleet of 15 MACHINES – LATEST GENERATION <

MILLING

- 3 AXES VERTICAL MACHINING CENTER.
 - Okuma model GENOS M560RV
- 2 5 AXES VERTICAL MACHINING CENTERS
 - Okuma model MU-5000V
- HORIZONTAL MACHINING CENTER
 - DMG Mori Seiki model NH5000DCG/40 4 ejes.
- FANUC ROBODRILL 3 AXES
- FIXED BED MILLING MACHINE
 - CORREA CF-17

CNC TURNING

- MULTITASK LATHE OKUMA.
 - Model MULTUS U 4000 1SW.
- CNC LATHE DOOSAN 240.
- 2 CNC LATHES DOOSAN 400.
- CNC LATHE MORI SEIKI NL-2000.
- LATHE AMUTIO CAZENEUVE HB575.
- LATHE AMUTIO CAZENEUVE HB725.

EDM

- ELECTROEROSION PENETRATION
 - ONA HS 300.
- WIRE CUTTING MACHINE
 - SODICK SL600.
- WIRE CUTTING MACHINE
 - SODICK AG600.
- ELECTROEROSION PENETRATION VARILLA.
 - Agie Charmilles drill 20.



Maximum dimensions: Turning $\varnothing 750 \times 1500 \times 1500$ – Milling $2000 \times 800 \times 800$ – 5 axes milling 750 mm^3
Materials : Titanium, Aluminium, Invar, Inconel, Duplex Steel, Stainless Steels, Nylon, PVC.

> MILLING <

OKUMA
MU-5000V

5 axes machining centre.
Ø 700 x 500 paths

OKUMA GENOS
M560RV

3 axes machining centre.
1050 x 560 x 460 paths

DMG MORI
NH-5000

Horizontal machining centre.
Ø 800 x 700 paths



> MILLING <

CORREA
CF-17

Fixed bed milling machine.
2000 x 800 x 800 paths

QUASER
MV204

3 axes machining centre.
1270 x 700 x 610 paths

DECKEL MAHO
DMC-104V LINEAR

3 axes machining centre.
1040 x 600 x 500 paths





CNC TURNING

MORI SEIKI
NL-2000

CNC lathe.
Ø 260 x 590 paths

DOOSAN PUMA
400 Series

CNC lathe.
Ø 550 x 1043 paths

DOOSAN PUMA
240 Series

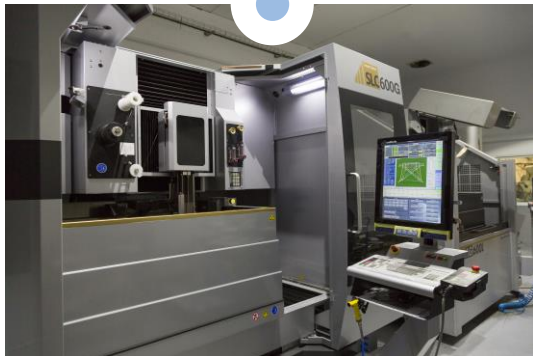
CNC lathe.
Ø 550 x 480 paths



> EDM <

SODICK SL600G

Wire cutting machine.
600 x 400 x 350 paths



SODICK AG600L

Wire cutting machine.
600 x 400 x 350 paths



ONA HS300

EDM machines.
400 x 300 x 300 paths



> OtherS <

SISMA

Laser engraving machine



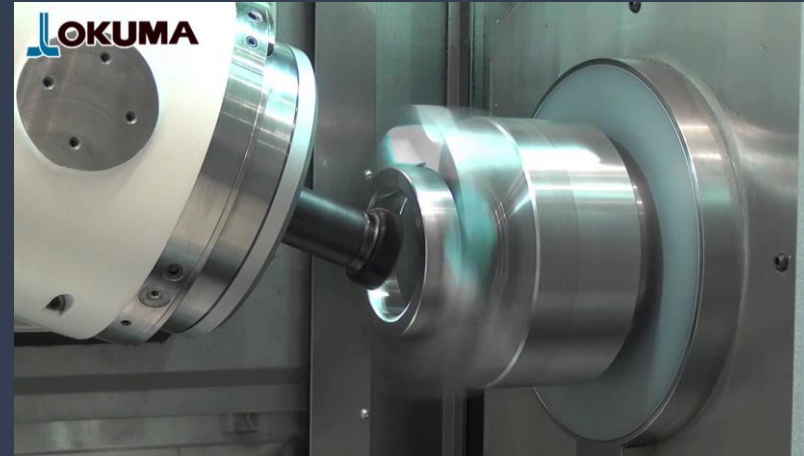


MULTITASK



OKUMA
MULTUS
U4000

Multitask
Ø 650 x 1500





TECHNICAL OFFICE
3 PEOPLE

ADMINISTRATION
3 PEOPLE

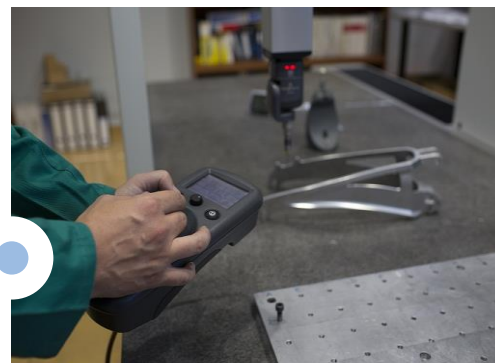


A team of 25 people



PRODUCTION
15 PEOPLE

CONTROL AND QUALITY
4 PEOPLE

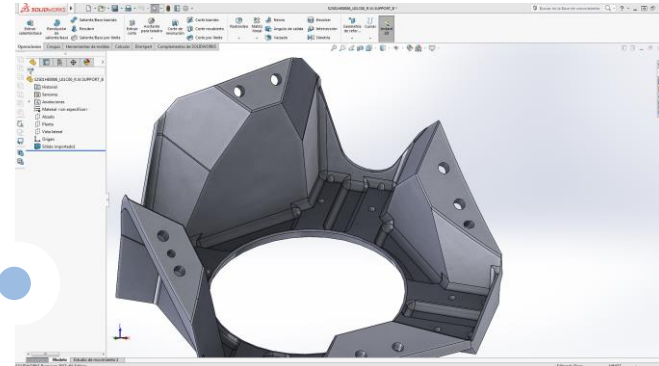




TECHNICAL OFFICE

We have a team of qualified professionals to undertake programming tasks, mechanical design, technical consulting, etc.

We have SOLIDWORKS and MASTERCAM licenses.
We can use files in many formats.
Great adaptability for design, modification, ...



Our quality control is carried out according to the standards ISO 9001 and UNE-EN 9100. In order to satisfy the needs of customers, we adapt to the internal processes and standards of each client



QUALITY SERVICE

We have the necessary technical and human resources to guarantee the final quality of our products. We have 3D measuring machines and all necessary metrology equipment.





At Dinumec we have different control processes that allow us to guarantee the highest levels of quality.



Checking documentation provided by the client.



Checking the CNC programming to optimise the production process.



Checking the processes of manufacturing and dimensional control of the parts in accordance with the requirements.



Statistical control of production in accordance with our customers' criteria.



Dimensional checks to certify that all required dimensions and tolerances are met. To do this, we use the following measuring equipment:

- DEA Global Coordinate Measuring Machine
- Measuring column
- Digital callipers
- Digital Micrometers
- Profilometers, etc.



Microscopic inspection of parts where required, to detect defects or imperfections not visible to the naked eye.



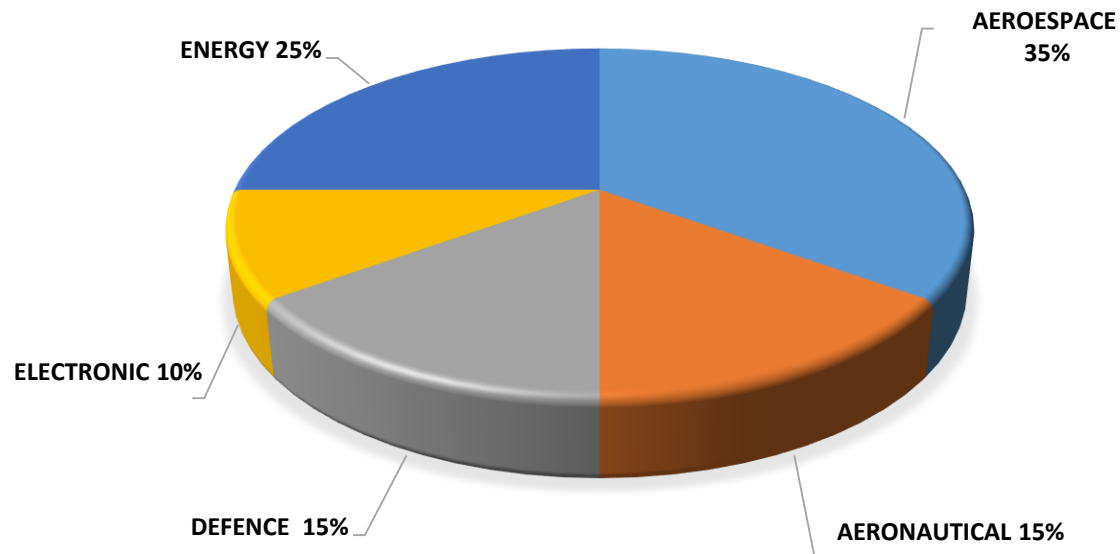
Equipment tests (penetrating liquids, x-rays, ultrasounds, etc.) by certified laboratories and according to the client's regulations, and load tests in our facilities with the necessary guarantees.

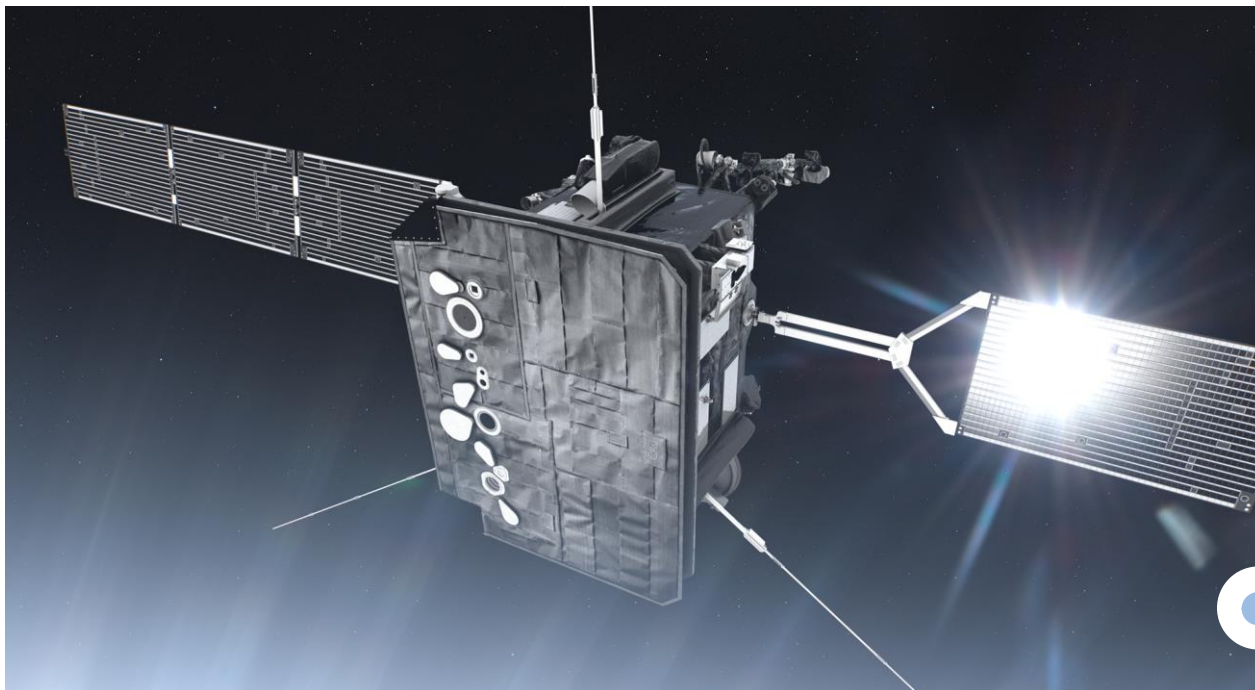


Dimensional report reflecting all the dimensions of each piece subject to control. Includes certificates of materials used and treatments performed.



CLIENTS BY SECTORS:





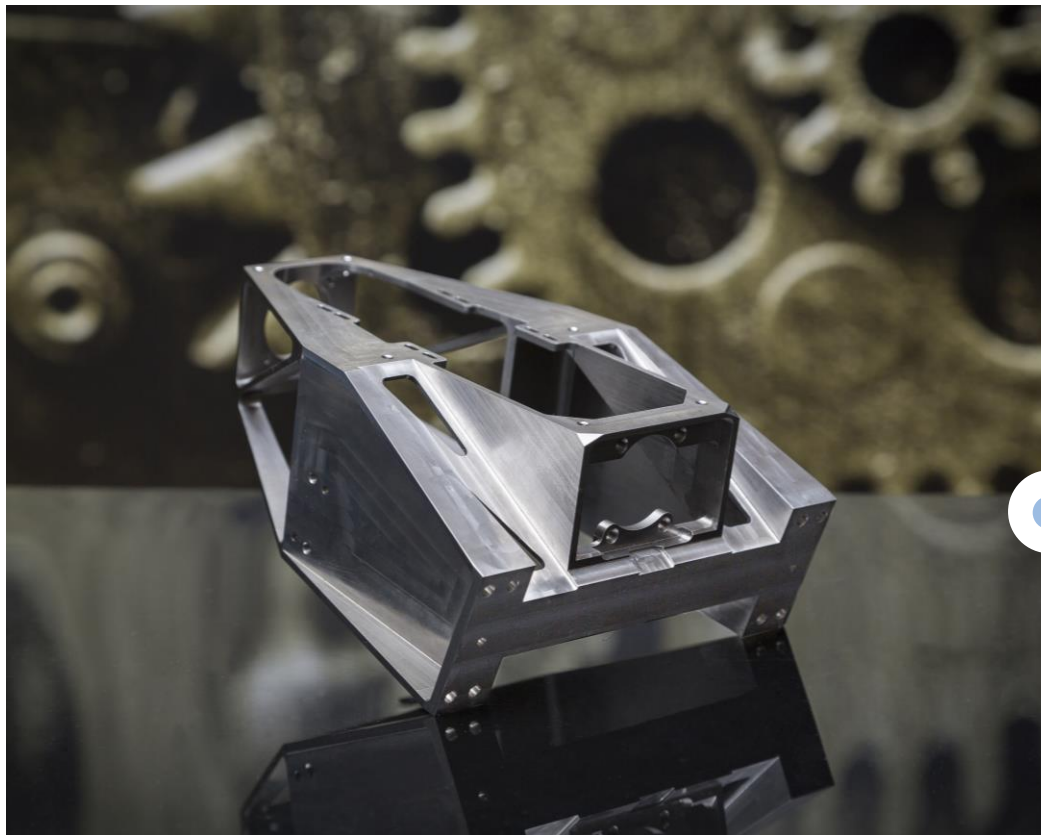
AEROSPACE

- BEPI COLOMBO
- SOLAR ORBITER
- EXOMARS
- EUCLID
- NANOSAT
- AMAZONAS
- MTG
- CHEOPS
- SEOSAT
- GALILEO
- PAZ
- METOP
- VEGA
- ARES



AEROSPACE

Manufacture of certification parts,
flight parts and waveguides in
communications systems





AERONAUTICS

- AIRBUS A320
- AIRBUS A350
- AIRBUS A380





AERONAUTICS

Manufacture of structural parts and tools for the maintenance of propellers, as well as tools for assembling structures.





DEFENCE

- MIURA
- SCRAB
- KC390
- AIRBUS A400M

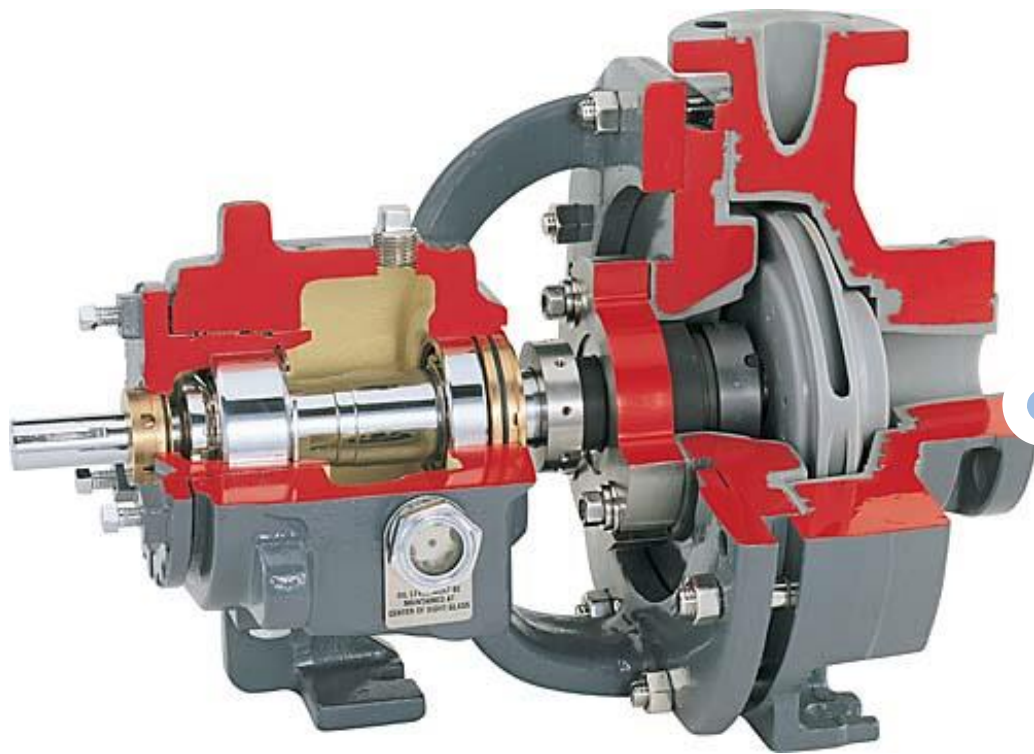




DEFENCE

- Manufacture of parts for control and structural systems.





ENERGY

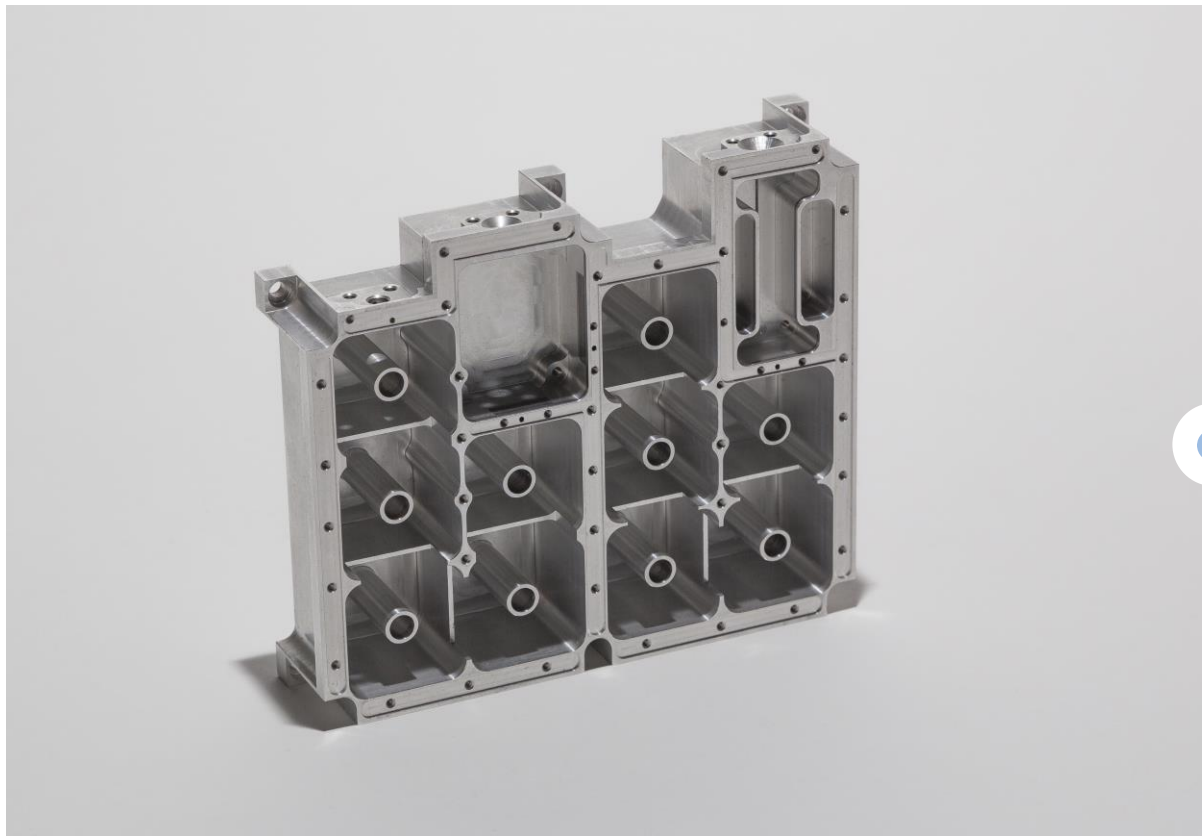
- DAHER
- TECTUS



ENERGIE

Manufacture of parts for test equipment in nuclear power plants, equipment of pumping stations for the energy production sector ...etc.





ELECTRONICS

Manufacture of watertight
boxes for electronic
equipment.

Here are some of our key clients:



THANK YOU



✉ C/ Francisco Alonso, 15 / Nave 13 F
Pol. Ind. Santa Rosa
28806 / Alcalá de Henares / Madrid

☎ +34 91 878 73 40

✉ dinumec@dinumec.com